



# Filling your SpaBerry

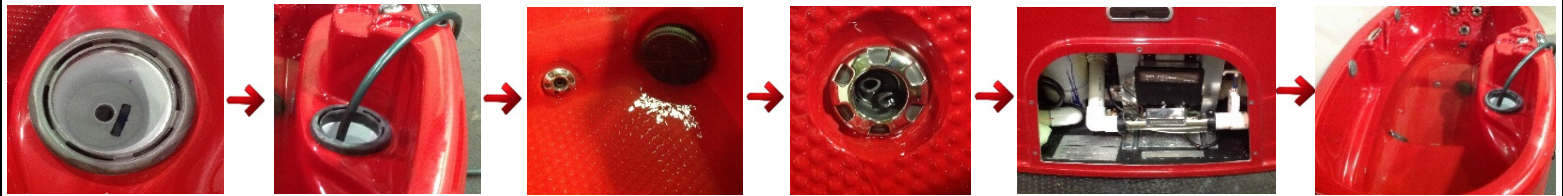
# 1.

Start by removing the 5 screws that are holding your easy access panel in place by rotating them counter clockwise by hand, and then remove the door. Locate the drain hose and ensure that the cap is securely in place and that the valve is in the "closed" position as displayed. Then ensure that each jet is in the "open" position by rotating them counter clockwise. Remove the filter canister by gently pulling it upwards, and then unscrew the filter counter clockwise and remove it.



Your filter area will now be open and clear as shown. Place the end of the hose down into the filter canister area. Now turn your water on; you will see water coming out of the lower intake valves and from the jets. Once water starts flowing, take another peak in the lower panel to ensure that all couplings are 100% secure with no leaks. Continue filling. You will see some bubbles coming up from the jets and filter canister as air escapes the interior lines.

# 2.



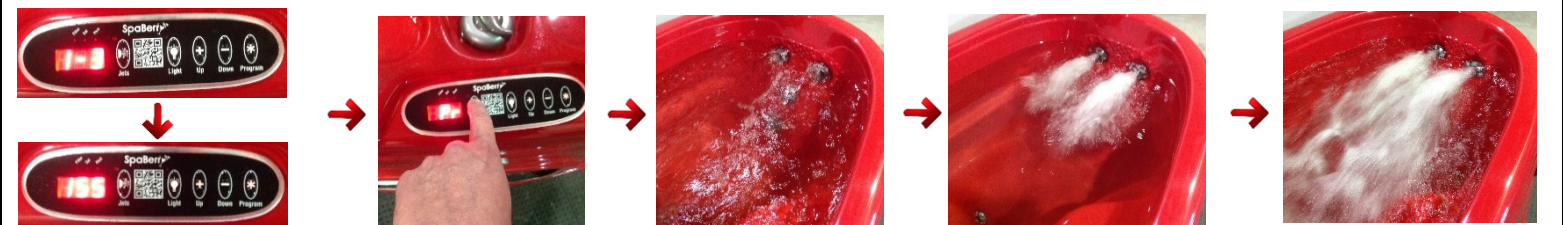
# 3.

Fill your SpaBerry just above the top jets, or to the top of the BerrySage nodules. Once your water is turned off, remove the hose. Now locate your SpaBerry GFCI cord. Please note your GFCI breaker might look different. Turn the cord casing counter clockwise to loosen, and pull out the required length of cord to reach your outlet; up to 9ft. You may now plug in your SpaBerry!



Once you connect power to your SpaBerry, the display will rotate between multiple software codes. Once it reads "Pr" it is ready to Prime. This engages the pump to push out any remaining air within the interior jet lines. Press the "Jets" button (low speed), wait 5 seconds, press the "Jets" button again (high speed) wait 5 seconds, then press the "Jets" Button again (turns off), wait 5 seconds. Repeat this process 3 to 5 times until all jets have water flow.

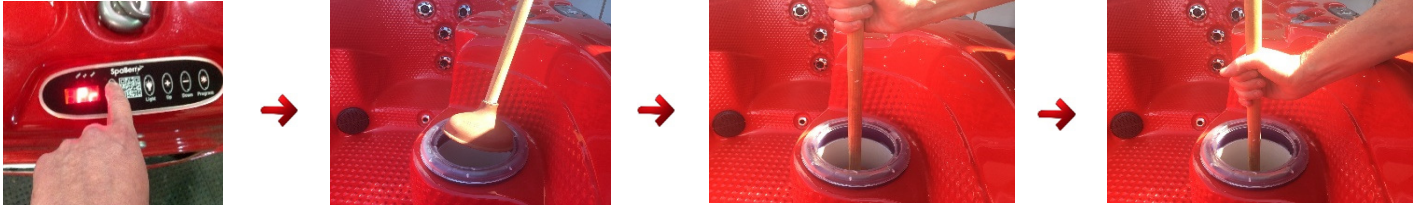
# 4.



# Filling your SpaBerry Continued...

## 5.

If you have been through step 4 quite a few times and still do not have full water flow out of the jets; a good trick is to use a clean plunger into the filter canister area. With your SpaBerry in prime mode, and the pump in high speed, take a plunger to the filter canister area and GENTLY pump down. This will cause more bubbles to escape. Continue until you have full water flow out of all the jets



Now press the "Up" button on your SpaBerry control panel. This will bring it out of the Pr / Prime mode, and the display will show as "Std" or Standard Mode. Use the "Up" and "Down" buttons on your control panel to set your desired temperature in Fahrenheit; 80 to 104 degrees. The water temp will increase approximately 3 degrees per hour, and the pump will run continuously until set temperature is reached

## 6.



## 7.

Now you can return the blue cylinder filter back into the canister area. Be sure to tighten it into place by twisting it clockwise once at the bottom. Then return the filter canister sleeve back over the paper filter.



## 8.

***Congratulations! You have successfully filled your SpaBerry!  
Close your BerrySeal cover and allow your SpaBerry to heat. This process normally takes 12 to 15 hours. Remember to not add any chemicals until your SpaBerry water is hot!***